

LA CHIESA DI SANTO STEFANO

ROOM DESCRIPTIONS AND LAYOUT

La Chiesa di Santo Stefano is a beautiful large property, with four distinct but interconnecting sections, as it was formerly a small monastery.

The chapel (LA CHIESA) is at the front of the property and immediately faces you as you drive towards the house. This is used for all types of events, including weddings – but when the property is rented for holidays it houses a small amount of gym equipment, and some yoga mats for guests' use.

The main entrance to the villa is through IL GRANAIO – the old granary. It is here that the monks would have prepared wine, bread, olive oil and hung their salamis and hams. They would have lived in the rooms immediately above the granary.

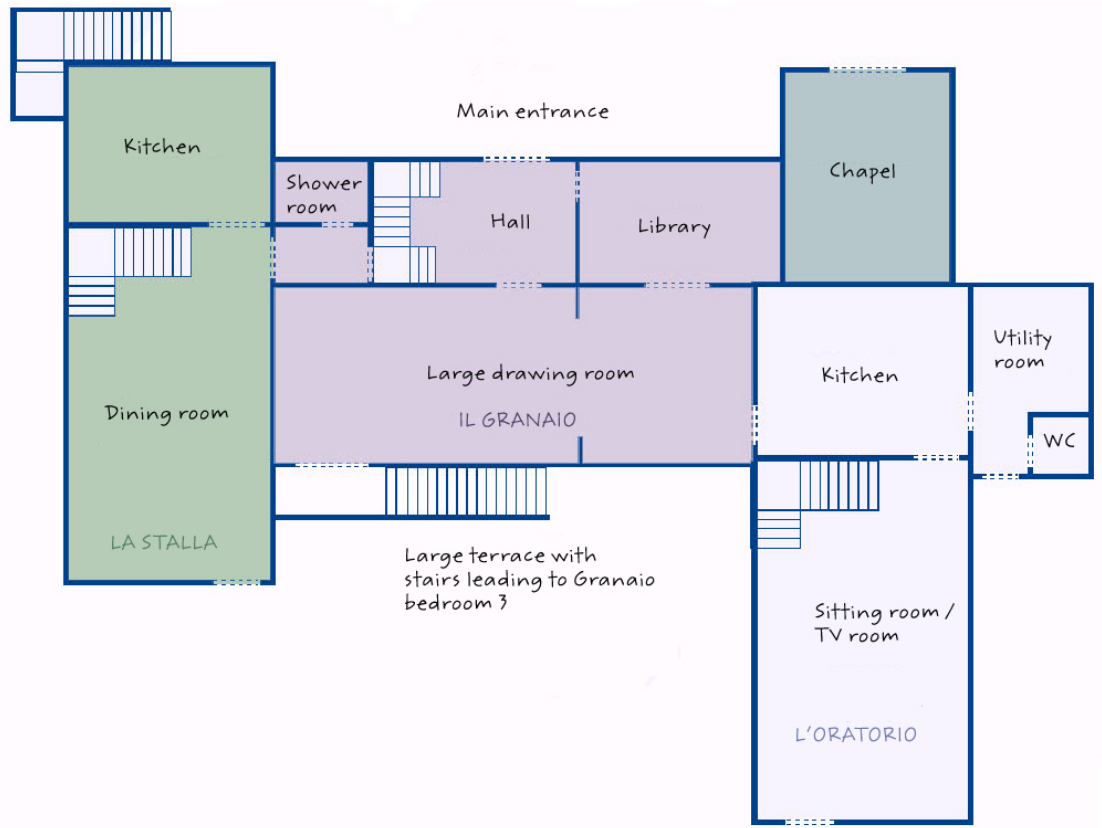
A door leads through from IL GRANAIO to L'ORATORIO – the old oratory where the monks would have prayed and prepared for their more formal services in the chapel.

Finally, the hall of IL GRANAIO leads to LA STALLA – originally a place where the animals were kept, but there were also bedrooms above.

The sections of the house retain these names, and although the downstairs rooms (with the exception of La Chiesa) are interconnecting, there are three separate upstairs areas with individual staircases – both internal and in some cases external as well.

The plans on the following pages are all approximate in terms of size and relative dimensions, but we hope they give you an idea of the exceptional space and accommodation that La Chiesa di Santo Stefano can offer.

GROUND FLOOR



ACCOMMODATION DESCRIPTION

The main entrance to the property is from the front with three steps down to the front door. You will enter into the hallway of IL GRANAIO.

IL GRANAIO

An antique stone staircase rises up to your right, and to your left is the entrance to a small library. This room has a couple of comfortable chairs, a table for games, a desk, and well stocked library shelves. Guests can borrow books or DVDs for the duration of their stay. In this room there is also wireless internet access available.

The main drawing room can be accessed both from the library and the hall. This is a large room with a stone archway, providing a range of seating for the whole group. There is an open fireplace and a television with DVD, and doors to the large rear terrace.

Leading from the hallway, there is a shower room, and access to LA STALLA

LA STALLA

LA STALLA has two large rooms downstairs. A well equipped kitchen provides the main cooking facilities for the house, with a double oven range, American fridge, dishwasher, washing machine and microwave, with other necessities such as kettle, coffee machine and food processor. A full range of Le Creuset pans are available for guests' use, and there are glasses and crockery for every occasion. The kitchen leads directly into the dining room,

with open fireplace and large formal dining table. Double doors lead onto the rear terrace, and a wooden staircase rises from the dining room to the first floor of LA STALLA.

L'ORATORIO

L'ORATORIO can be accessed from the main drawing room, or from the double doors at the rear which lead to the terrace.

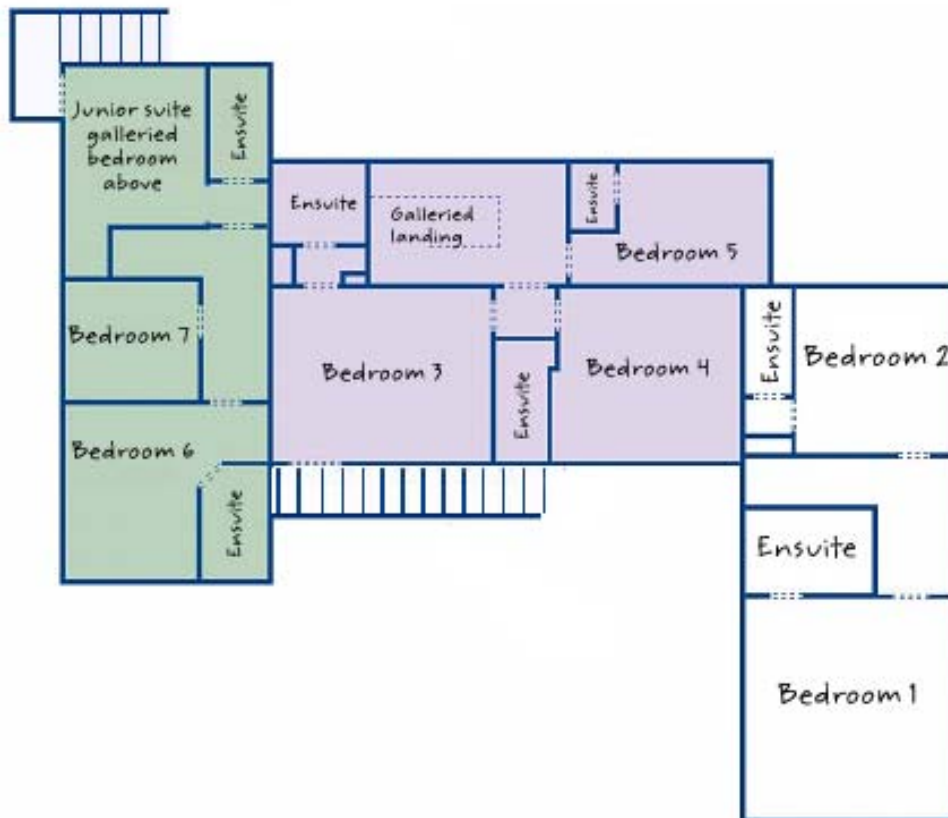
This part of the house has another separate kitchen, with large oven, hob, dishwasher and a small fridge. There is a dining table for six in this room, and it is well equipped with Le Creuset pans, crockery and cutlery. A second kitchen can often prove very useful when large parties are holidaying together! There is also a worktop high open fire, which is wonderful for those taking a winter break. Leading from the kitchen, there is a utility room with sink and washing machine, and a small WC with wet room style shower.

The kitchen also leads into the Oratorio sitting room. This is a large and comfortable room, with two three seater sofas, and various items of antique wooden furniture. It has a stone fireplace, which again is perfect for the winter evenings.

This sitting room also has a 42" flat screen TV, a DVD player and a Sky Box, which can access a range of English speaking channels, including movies and sport. Guests frequently dedicate this room to those in their party who want to watch TV or films!

An antique wooden staircase leads from this room to the first floor of the Oratorio.

FIRST FLOOR



IL GRANAIO – FIRST FLOOR

At the top of the stairs in IL GRANAIO there is a galleried landing, leading to a twin bedded room (5), furnished with hand painted wardrobe and chest of drawers. An en suite shower room with WC, sink and large shower is accessed from this room.

To the right at the top of the stairs is an archway through to the entrance to bedrooms 3 and 4. Bedroom 4 is furnished with antique and specially made furniture. There is a large chest of drawers, a double wardrobe, and access from this room to an en suite shower room, with WC, bidet, sink and shower. This room can be either a twin or a double.

Bedroom 3 has an extra long bed and antique Italian furniture. There is a door to the outside stairway from this room, leading directly to the east facing terrace. Opposite this door there is a step up to a small dressing area with built in wardrobe, with access through to the en suite bathroom, with bath (shower over), sink, WC and bidet.

LA STALLA – FIRST AND MEZZANINE FLOORS

The stairs lead to a wide landing. To the right is a small bedroom (7), most suitable for a single bed (for an adult), but two full sized single beds are available for this room when used by children. There is no en suite bathroom for this bedroom. Adult guests can use the downstairs bathroom, situated between the Stalla and the Granaio. If children are using this room, the bathroom to the junior suite is accessible without going through a bedroom (adjacent to the suite's sitting room).

At the end of the corridor is a double bedded room (6), with hand painted furniture and an en suite with WC, bidet, sink and shower.

At the other end of the corridor (turning left at the top of the stairs) is the entrance to the junior suite. Straight ahead through the door is the bathroom for the suite. This bathroom has a whirlpool bath (shower over), sink, WC and bidet. Adjacent to this door is the entrance to the sitting room of the suite. This room has a two seater sofa, and items of antique pine furniture. It has a stereo system (and can optionally be provided with a small TV and DVD player). A door from this sitting room accesses an outside staircase, leading to the front of the house. A spiral staircase leads from the suite's sitting room to a galleried bedroom on the mezzanine floor. There is a double bed, hand painted wardrobe, and antique Italian chest of drawers. This is a very spacious bedroom.

L'ORATORIO – FIRST FLOOR

The stairs lead to a small landing, with a double built in wardrobe for guests in bedroom 1. There is a further bookcase filled with novels which guests are free to borrow. To the right is the largest of the bedrooms (1), with an extra long double bed, and an antique chests of drawers. A door leads through to a bathroom, with Whirlpool bath and shower over, WC, bidet and sink.

The second bedroom (2) has an extra long double bed and antique chest of drawers. An opening leads through into a small dressing area, with built in wardrobe. The bathroom is accessed from this area, with WC, bidet, sink and large walk in shower.

All bedrooms have bedside tables, lamps and bedroom chairs (mainly antique).